

2024 VOTER INFORMATION BOOKLET



Shelby County Democrats are committed to working towards a government that is beneficial for all the people of Alabama, regardless of gender, race, age, religious beliefs, sexual orientation, or ethnicity.



Yes, Democrats!

You are not alone.

We are active in Shelby County, and across Alabama!

When Joe Biden took office as President in January, 2021, with Vice-President Kamala Harris at his side, he was faced with the effects of one of the worst pandemics in modern history, hundreds of thousands of deaths, and an economy struggling to avoid recession. Despite the bungling of the previous administration and its lack of transparency with his incoming staff, Biden and his team created a system of distributing the long-awaited vaccines that eventually slowed the spread of the deadly virus. Using wise economic policies, the Biden administration began the slow and steady work of restoring a booming economy, resulting in today's record-high stock market figures, slowing inflation, and rising wages. President Biden's accomplishments during his term in office are irrefutable, but perhaps his greatest contribution to saving our country and our democracy is his unselfish decision to stand down in his bid for re-election and to endorse his Vice President Kamala Harris, in the continued fight for freedom and justice for all.

Our libraries and librarians continue to be beleaguered by right-wing extremists. Go to ReadFreelyAlabama.org to learn more about attacks on free speech at our public libraries and to sign up for their newsletter.

We are fortunate to have eight Democratic County Candidates for 2024 and a Democrat for US Congressional District 6 candidate! Please check our website at shelbycountydems.com, check the candidates' FB pages and websites, and do all you can to support our candidates! And make sure you vote on Nov 5th!

Marsha S Sturdevant, MD
Chair, ShelbyDems

Meet your Democratic candidates inside...

SHELBY COUNTY BOARD OF EDUCATION



Julia Craig Place 1

Julia Craig, lifelong resident of Montevallo, is running for election to the Shelby County School Board, Place 1. Craig graduated from Montevallo High School, attended Tuskegee University, then graduated from Troy University with a Political Science major. She then earned a Master's degree in Organizational Leadership from Ashford University, and now plans to pursue her lifelong ambition of finishing law school. Throughout her years of education leading to law school, Julia has been an entrepreneur. Through her company, Craig Consulting, she writes grants, completes tax returns, prepares marketing analyses, and teaches financial literacy to high school students.

Despite her busy schedule, Craig and her husband spend much time at athletic events, working to make all student athletes feel appreciated, acting as parental stand-ins for parents who are not able to attend games. Craig is also active in the local NAACP chapter and has organized a choir which performs at community events. Craig says she never considered running for elective office until she realized that the elected school board makes decisions that affect all of Shelby County's children. She has spent years listening to her three children, their friends, and parents of their friends talk about ground level issues – from school lunches, test scores and broken facilities to bus driver shortages and security concerns. This knowledge will help Craig bridge the gap between students, parents, teachers, and school board.

FB -- [Julia Craig for Shelby County Board of Education Place 1](#) • Email -- JuliaforShelbyCountyAL@gmail.com
 Act Blue -- secure.actblue.com/donate/julia.craig.campaign

SHELBY Co. DISTRICT COURT PLACE 2



Ashley N. Bell Place 2

Attorney Ashley N. Bell is a native of Mobile, Alabama, and is now an active resident of Shelby County. She is happily married with three wonderful children, and is a member of Sigma Gamma Rho Sorority, Incorporated.

Attorney Bell is a full-time practicing Attorney in AL, the Founder of A. Bell Law Firm, LLC., and serves as a Special Municipal Court Judge. In addition, Attorney Bell is the Democratic nominee for Shelby County District Court Judge, Place 2. As a practicing Attorney, Bell has devoted her life to Criminal Defense, Juvenile Law, and Family Law/ Domestic Relations. She is licensed to practice before all Alabama State Courts,

as well as Federal Courts in the Northern and Southern Districts of Alabama.

With a wealth of experience in the Legal Field and a deep commitment to Justice, Attorney Bell has a comprehensive understanding of the Legal System and the needs of the local community. She is known for her unwavering commitment to upholding the law, ensuring fair and impartial justice, and protecting the rights of all individuals. In addition, Attorney Bell continues to devote pro bono work hours with underserved populations.

FB -- [OntheMoveWithBell, Ashley N Bell for District Court Judge](#) • Email -- ashleynbellforjudge@gmail.com

“We do not have government by the majority.
 We have government by the majority who participate.”

Thomas Jefferson

SHELBY COUNTY COMMISSION



Bobby "CP" Pierson District 3

Bobby J. Pierson, known by many in Shelby County as “C.P.” for Coach Pierson, is the Democratic candidate for Shelby County Commission, District 3.

Explaining his decision to run for office, Pierson states, “In Shelby County we don’t have a single county-wide elected Democrat. I believe that we need a seat at the table.”

Coach Pierson grew up in Wetumpka and graduated from Alabama State University on a football scholarship. He taught initially at Evergreen High School, then received an offer to teach at Montevallo High School in 1982, where he stayed until retirement. At Montevallo, the tireless Coach Pierson taught classes in health, PE, and traffic safety, and served as head basketball coach and assistant football coach. Additionally, he coached tennis, track, and golf in season, plus he drove a bus route twice a day.

Pierson is President of the Shelby County Retired Educators Association, Third Vice President of the Shelby County NAACP, a member of the Alabama State NAACP, the Montevallo Library Board, and Omega Psi Phi Fraternity, Inc. He has been involved in Democratic Party politics since his arrival in Shelby County and belongs to the Shelby ADC. If Coach is successful at getting that seat at the table, he says that he will do what’s right for the people, no matter what color, race, religion, or gender.



Phil Kirk District 4

Phil Kirk is running for Shelby County Commission, District 4. Born and raised in West Virginia, Kirk moved to Alabama, where he has ancestral roots, in 1986 and has lived in Pelham since 1999.

He earned a degree in Computer Science from Beckley College in WV and a BS degree in Business Administration from UAB. He was a QA Tester during the Y2K concerns in 1999 and has worked in software development for 25 years.

Politics runs in his veins. His father worked on political campaigns for friends, and as a child Kirk helped hand out campaign materials, while his mother was a poll worker. Phil helped deliver ballot boxes to the courthouse and watched the counting of the votes. His grandfather, a railroad union man, always included the grandchildren in political discussions.

Kirk decided to run for the county commission to give the people in District 4 a choice on the ballot. If elected commissioner, his primary concerns will be infrastructure. He will want to ensure completion of Hwy 52 updates and the railroad bridge. He will also protect our libraries from book-banning extremists, work to keep sales taxes low, and make sure our tax monies are spent wisely. Finally, if/when medical marijuana is legal, he wants to make sure that Shelby County citizens have easy access to dispensaries in the county.

FB -- [Phil Kirk for Shelby Co Commission District 4](#)
 Email -- Phil.Kirk.ShelbyCo.District4@gmail.com

SHELBY COUNTY COMMISSION



Leslie Tyus District 5

Leslie Tyus is the Democratic candidate for County Commission, District 5. Born and raised in Augusta, Georgia, she earned her Bachelor's degree from Clark Atlanta University, then attended UAB for a Master's degree in Public Health and another one in Counseling.

While pursuing her graduate degrees, Tyus gained significant experience in public health. She did field research for the Birmingham Youth Information Project and UAB Healthy Passages. She was a graduate assistant with the Magic City Stroke Prevention Program, UAB Lung Health, and the UAB Smoking Cessation Project. She interned with Jefferson, Blount, St. Clair

Mental Health Authority. Since earning her Master's degree in Counseling, Leslie has worked full-time in her chosen field, providing counseling through a community mental health non-profit agency and non-profit child advocacy centers.

Tyus serves as the Chair of the Public Relations/Outreach Committee of the Shelby County Democratic Party. She is also a member of the Shelby County NAACP and the Military Order of the Purple Heart Ladies Auxiliary, Unit 425.

If elected to serve on the Shelby County Commission, Tyus will be aware of the needs of all county residents, such as improving waste management and road maintenance. She is also interested in keeping libraries open to all, and making sure that librarians are able to perform their duties without interference.

www.facebook.com/TyusForShelbyCountyCommissioner • <https://secure.actblue.com/donate/leslietyus>



Anondo Banerjee District 6

Anondo Banerjee, a native of Birmingham, is running for Shelby County Commission, District 6, partially to inspire other young citizens to get involved in public service. His own impetus to run for office came in 2022, when he saw more Libertarians on the ballot than Democrats. His vision is to get Democrats elected at all levels.

After earning a Bachelor's degree in Biology and Chemistry from UNC and Master of Public Health degree from UAB, he used his public health knowledge to create successful violence prevention programs for three years at Miami University, then returned to Alabama as a program consultant, generating over \$1 million in revenue for LifeLabs Learning. Recently he has found satisfaction working with educational non-profits, focusing on helping graduating seniors create plans of action.

Working with college-age people has convinced him that young Americans do not feel heard by the government, from local to federal, and he wants to create an awareness among Shelby County youth that they have the power to make a difference through political activism. This busy young man is also heavily involved with the Shelby County Democratic Party, for which he is Vice Chair for Young Adults.

If elected to the County Commission, Banerjee will be a representative not only for his constituents in District 6, but for all young people in the county who feel underserved and overlooked.

SHELBY COUNTY COMMISSION



Marsha S. Sturdevant District 7

Marsha Sturdevant, MD, is a candidate for Shelby County Commission District 7.

Dr. Sturdevant, a native of Oregon and educated in Oregon, Indiana, and Minnesota, moved to Shelby County in 1991 when she began working at UAB.

She was a professor at UAB School of Medicine for 26 years and Director of the Adolescent Clinic at Children's Hospital for 24 years. Upon retirement six years ago Dr. Sturdevant continued to help people. She serves on the Board of Directors of AIDS Alabama and is Central

Regional Director of Destination Imagination, an international organization which involves students in project-based problem-solving competitions. She is an active member of Alabama Arise, NAACP, Friends of North Shelby County Library, Alabama River Alliance, and GASP. She is a frequent participant in marches and rallies that support good policies or protest bad ones. Although she has never run for elected office before, she is the current Chair of the Shelby County Democratic Party and a member of the Alabama Democratic Party Executive Committee.

When asked why she decided to run for office, Dr. Sturdevant replied, "I am running for county commissioner for the same reason I became a doctor, to help people. I want people in my district to count on me to listen to their concerns and to work on solutions."

She and her husband have three grown children and three grandchildren.

www.facebook.com/MarshaForShelbyCountyAL



Jenice Prather-Kinsey District 8

Dr. Jenice Prather-Kinsey is running for Shelby County Commission, District 8.

Her election would give the commission a member who is knowledgeable and experienced in leading large organizations with huge budgets, was for years head of a department in state government, and is dedicated to serving the needs of a diverse constituency.

A native of Kansas City, MO, Dr. Prather-Kinsey moved to Alabama in 2010, when she was named Full Professor of Accounting at UAB, after having been an accounting professor at the University of Missouri since 1984. Her areas of specialty are international accounting and cost/managerial accounting. She was educated at Lindenwood University in Missouri and the University of Illinois and earned her PhD at the University of Alabama. She is recognized world-wide for her publications in academic journals and has presented her research on every continent except Antarctica.

When the state of Missouri passed gaming legislation, Dr. Prather-Kinsey was tapped by the governor to establish the Missouri Gaming Commission. She served as the first state Senate-confirmed Gaming Commissioner of Missouri from 1993 – 1999. She has served as board member, advisor, chair, and president of multiple national and global organizations related to the accountancy profession. She is now on the Dream Team at Church of the Highlands, serves on an American Accounting Association committee, and is on the Delta Inc. Board.

www.JPK4shelbyal.com • Facebook @Prather-Kinsey-for-ShelbyAL
Instagram Pratherkinseyforshelbycounty

U.S. CONGRESS - HOUSE OF REPRESENTATIVES



U.S. Congress - District 6 ELIZABETH ANDERSON

Due to Federal campaign finance laws we are unable to provide details in this publication.

Visit her website for information
www.eaforcongress.com

PLEASE NOTE! The person that currently holds this position is **Republican Gary Palmer**. He is a member of the contentious **Freedom Caucus** which is generally considered to be the most conservative and furthest-right bloc within the House Republican Conference. When first elected in 2015 he promised that he would not stay in office for more than 10 years. By running for re-election this year, it is a promise that he has now broken.
Vote him out with a vote for Elizabeth Anderson!

STATEWIDE CANDIDATES

AL SUPREME COURT CHIEF JUSTICE **Greg Griffin**

Judge Greg Griffin has served on the Alabama 15th Judicial Circuit since 2014, and is now on the November 5, 2024 general election ballot as the Democratic candidate for Chief Justice of the Alabama Supreme Court.

Griffin was educated at St Jude Educational Institute, earned his Bachelor of Arts from Morehouse College, his Juris Doctorate at the University of Pittsburgh School of Law, and an LL.M degree in tax law from Boston University School of Law. Griffin has served as a criminal defense and personal injury attorney, a state prosecutor, a federal prosecutor, and owner of Greg Griffin Law Office, LLC. He was an assistant attorney general from 1987 to 1995. From 1995 until his appointment to the Circuit Court bench in 2014, he was chief legal counsel for the Alabama Board of Pardons & Paroles. Griffin is a veteran of the United States Army Reserve, an Eagle Scout, Marshall Brennan Constitutional Law Fellow, member of Alpha Phi Alpha Fraternity, Inc., and Chairman of the Greg and Debra Griffin Foundation, named for his parents.

Judge Griffin and his attorney wife have three children.

“Politics is like driving. If you want to go backwards put it in R, but if you want to move forward, pull that stick on down to D!”

Donna Smalley

**IF YOU ARE TURNED AWAY AT THE POLLS BECAUSE YOUR NAME IS NOT ON THE REGISTER,
DON'T WALK AWAY. SAY THIS:
I REQUEST A PROVISIONAL BALLOT AS REQUIRED BY LAW.
DON'T LET THEM STEAL YOUR VOTE.**

George Takei

We would like to give a big thank you to each of our candidates! We greatly appreciate that you stepped up to be on the ballot! These are ordinary citizens, not career politicians. Most are first time candidates. They ran because they care and they wanted to give Democrats in Shelby County a choice.

Candidates, we know it is hard to put yourself out there, and also how much time and money it takes to run for office. We appreciate the sacrifices you and your families have made. This is true democracy in action. Thank you!

Your Help is Needed to Elect Democrats!

JOIN the Shelby County Democrats

Attend our monthly meeting held on the third Thursday of each month at 6:30 pm. Membership is only \$25 a year (membership not required to attend meeting or the monthly social). See website for dates, times, and locations. Sign-up for our email list to learn about the many exciting events happening around Shelby County.

www.shelbycountydems.com

★ **DONATE** as much as you can, as often as you can. Campaigns are expensive. Each candidate could use your help. We are up against a well-funded GOP here in Alabama so candidates need all you can give to win against them.

VOLUNTEER: candidates' campaigns can always use help. Some candidates' campaigns will be out knocking on doors to meet voters. You can also help with phone calls, data entry, writing, labeling, and stamping postcards. Invite candidates to your meetings and events to speak with and meet voters. Or, host a 'meet & greet' in your home so friends and neighbors can talk with your candidate and help them raise funds. Sign-up to volunteer with the candidate of your choice.

SHOW YOUR SUPPORT! Put candidates' signs in your yard. Put their bumper stickers or magnets on your car. Wear their buttons and t-shirts.

Restoring Your Right to Vote

If you have had a felony or know someone who has...

An individual who has been barred from registering and voting by reason of a disqualifying felony conviction may request to have their voting rights restored by applying for a *Certificate of Eligibility to Register to Vote (CERV)*.

An individual may qualify for a *Certificate of Eligibility to Register to Vote* if they have fulfilled all terms of the sentence for the disqualifying felony conviction.

For further information, please contact the Alabama Bureau of Pardons and Paroles at 334-353-7771 or visit pardons.state.al.us.

Voter Rights & Frequently Asked Questions

I turned in a voter registration application. Am I registered to vote?

Just because you turned in a voter registration application does not necessarily mean you are registered to vote. If you are unsure about the status of your application, you can always call your local Board of Registrars or visit www.sos.alabama.gov

I turn 18 after the voter registration deadline but before the election. Can I vote in the election?

Yes. As long as you turn 18 on or before election day, even if your birthday is after the voter registration deadline, you can apply for voter registration and participate in that election (as long as you meet other voter qualifications). Please note that you must turn your voter registration application in before the 14-day close for voter registration.

How can I become involved in the electoral process as a high school or college student?

Alabama Act 2019-476 allows eligible high school and college students to intern as unpaid student poll workers. Students must be recommended by their principal or other school official and must be at least 16 years of age at the time of the election.

I have moved from another state and want to vote. What should I do?

You must contact the Board of Registrars and submit an update to your voter registration record.

I have moved from one Alabama county to another and want to vote. What should I do?

When you move across county lines, you must register to vote in your new county of residence. Voter registration does not automatically follow you from one county to another.

It's the day before the election. I forgot to register to vote. Is it too late?

Yes, it is too late to register to vote for that election. Registration is closed during the fourteen days prior to an election and on election day.

What if I make a mistake marking my ballot?

If you have not already placed your ballot in the electronic tabulator or ballot box, you may ask a poll worker for another ballot. The poll worker will spoil your first ballot so that it cannot be counted or reused.

Are candidates allowed to campaign outside my polling place?

Yes, electioneering or campaigning can be permitted outside the polling place. However, this activity must not be closer than 30 feet to the entrance of the polling place. For Shelby County, the AG has issued an opinion that if the polling place is on private property, the property owner can determine whether electioneering or campaigning is allowed on their property.

Can a candidate assist me in marking my ballot?

Yes, if you ask the candidate to help you. The only people who cannot assist a voter are the voter's employer, an agent of the voter's employer, or an officer or agent of the voter's union.

I am worried about privacy while voting or someone seeing my ballot.

The right to vote a secret ballot is essential. Each voter has a right to cast a ballot in secrecy and in private. Polling locations are supposed to provide dividers on tables and other privacy measures. If you don't see any, ask for the official in charge and request that the dividers be put in place.

My name is not on the voter list when I get to the polling location.

Alabama poll workers have the technology to view the voter database to confirm voter's eligibility. The poll worker will tell the voter if they are at the wrong precinct and will direct them to the correct polling location. **If a voter votes at the wrong voting precinct, their vote will not count, even if they fill out a provisional ballot.** They must vote at their own precinct!

If their name does not appear on the voter roll at all, they may complete a provisional ballot at their correct polling location. **The voter then has until 5 P.M. on the Friday following the election to appear in person, with a valid form of photo ID, at the Board of Registrars.** If proper ID is presented by this deadline, the ballot will be counted as long as all other requirements were met. The board of registrars will investigate the reason their name was not in the voter database.

I lost my photo ID or forget to bring it to the polls.

A voter who is required to present valid photo identification but who does not do so will be allowed to vote a provisional ballot as provided for by law.

Can I wear campaign buttons or t-shirts with political advertisements into the polling place?

Yes. However, you should not loiter or leave any campaign materials in the polling place.

Can I carry a sample ballot into the voting booth?

Yes. However, you should not leave the sample ballot in the polling place.

If Constitutional Amendments are included on the ballot, must I vote on them?

No. You are not required to vote on constitutional amendments. Similarly, you are not required to vote in all races on the ballot. Participation is your choice.

When I voted in the Primary Election, I was asked to declare a political party preference. Why is that?

In Alabama, we have closed primaries and you can only vote for one party's candidate. In the General Election you can vote for whomever.

Can I take photographs or videotape inside my polling place?

Voters are permitted to take a picture of or with their own ballot, as long as they do not disclose the content of any other voter's ballot or disrupt the voting process.

Can I take a cell phone into my polling place?

Yes. However, use of the phone in the polling place should not disturb other voters or disrupt the polling place. If your cell phone has a camera, you cannot take photographs or film video inside the polling place.

I do not see my question on this page. What do I do now?

If your question is not addressed on this page, please call the Elections Division at 1-800-274-8683 or 334-242-7210.

DEMOCRATS DELIVER!

THE BIDEN-HARRIS ADMINISTRATION'S HISTORIC ACCOMPLISHMENTS

They Delivered On Their Promises

THE AMERICAN RESCUE PLAN Just six weeks into their administration, Joe Biden signed the American Rescue Plan to jumpstart our economy and change the course of the pandemic. The American Rescue Plan funded our national vaccination campaign and helped safely reopen America's schools.

THE BIPARTISAN INFRASTRUCTURE LAW President Biden worked across the aisle to deliver what decades of presidents promised and failed to do: rebuild our nation's roads and bridges, upgrade our public transit, clean up pollution, and provide high-speed internet to every American. (*Alabama GOP Congresspeople voted against this!*)

CONFIRMATION OF JUSTICE KETANJI BROWN JACKSON President Biden appointed Justice Ketanji Brown Jackson, the first Black woman to ever serve on the Supreme Court. She is also the first public defender to serve on our nation's highest court.

THE BIPARTISAN SAFER COMMUNITIES ACT The Bipartisan Safer Communities Act is the most significant gun violence prevention legislation in 30 years. It will help keep guns out of the hands of dangerous people, narrow the "boyfriend loophole," and expand mental health and safety services in schools.

THE CHIPS AND SCIENCE ACT The CHIPS Act will bring back manufacturing from overseas and create good-paying union jobs here at home. Since President Biden signed it into law, companies have already announced almost \$300 billion in new American manufacturing investments.

EXPANDING HEALTH CARE FOR VETERANS THROUGH THE PACT ACT President Biden signed into law the most significant expansion of benefits and services for toxin-exposed veterans in more than 30 years.

SIGNED MARRIAGE EQUALITY INTO LAW President Biden signed the Respect for Marriage Act to enshrine marriage equality for same-sex and interracial couples into federal law.

THE INFLATION REDUCTION ACT President Biden signed landmark legislation to bring down costs for families, lower prescription drug prices, and make historic investments in American clean energy jobs and manufacturing. *Every single Republican in Congress voted against it.*

CHANGING OUR FAILED APPROACH ON MARIJUANA President Biden pardoned all prior federal offenses of simple marijuana possession, removing a burden to employment, housing, and educational opportunities for thousands of Americans.

PROTECTING REPRODUCTIVE RIGHTS In the wake of the Supreme Court's decision to overturn Roe v. Wade and strip a constitutional right from the American people, President Biden issued executive orders to preserve access to reproductive care and protect the right to travel across state lines to receive care.

HISTORIC CLIMATE ACTION President Biden rejoined the Paris Climate Accords on his first day in office. He is delivering on the most aggressive climate agenda in American history through historic investments in clean energy.

RALLYING THE WORLD IN SUPPORT OF UKRAINE Since the start of Vladimir Putin's unprovoked invasion of Ukraine, President Biden has rallied the world to stand with Ukraine, defend democracy, and stand up to autocracy.

PROTECTING THE AFFORDABLE CARE ACT President Biden has worked to protect and strengthen the Affordable Care Act. Now, millions of Americans are saving \$800 per year on their health insurance and 4-in-5 Americans can find coverage for \$10 a month or less through the ACA.

CRIMINAL JUSTICE REFORM President Biden signed a landmark executive order to promote safe and accountable policing, ban chokeholds, restrict no-knock entries by police, create a national police accountability database, and prohibit the transfer of military equipment to local police departments.

STUDENT DEBT RELIEF President Biden has approved the cancellation of billions in student loan debt for millions of Americans, as well as the largest increase in Pell Grants in over a decade.

We are not going to agree with any candidate on every issue, but there are basic tenets like decency, civility, and honesty that we should all agree are the paramount qualities needed in who we vote for as our leaders.

VOTING WITH AN ABSENTEE BALLOT

<https://www.sos.alabama.gov/alabama-votes/voter/absentee-voting>

Go to the website above to find answers to your questions about topics such as eligibility for an absentee ballot, applying for an absentee ballot, and casting an absentee ballot.

IN PERSON ABSENTEE VOTING begins on September 11, 2024. Voters need to go to Margaret Dawson's office at 202 West College Street, Columbiana, Alabama 35051, and vote anytime during office hours between 9/11/24 and 10/31/24.

To receive a Shelby County **APPLICATION for an Absentee Ballot** go to <https://www.sos.alabama.gov/alabama-votes/absentee-ballot-application-by-county>

Your **Application, if sent in by mail**, must be received in the office of the Absentee Election Manager for your county **no later than 7 days prior to the election**.

Your **Application, if being delivered in-person**, must be received in the office of the Absentee Election Manager for your county **no later than 5 days prior to the election**.

Absentee Ballots returned by mail, must be received by the Absentee Election Manager **no later than noon on election day**.

Absentee Ballots delivered by hand, must be in the Absentee Election Manager's office **by the close of business (but no later than 5 p.m.) October 31, 2024**.

Please fill in all information completely and accurately.

Absentee Election Manager for Shelby County - Margaret Dawson

Physical Address: 202 West College Street, Columbiana, Alabama 35051

Mailing Address: P.O. Box 468, Columbiana, Alabama 35051

Phone Number: (205) 610-0958

Generic and Municipal Absentee Ballot Applications; UOCAVA; Emergency Absentee; Permanent Disability; and Permanent Disability Municipal Absentee Ballot Applications can all be found on the SOS website. Submit to Municipal Absentee Election Manager.

[You can track the status of your absentee ballot by going to that link on the SOS website.](#)

MILITARY AND OVERSEAS VOTERS

Military and overseas voters may now choose to receive their ballots for Federal offices either electronically, by regular U.S. mail, or by commercial carrier.

ABSENTEE VOTING ELIGIBILITY

A voter may cast an absentee ballot if the person

- Expects to be absent from the County on Election Day
- Is ill or has a physical disability
- Is physically incapacitated (check website for specifics)
- Is a registered Alabama voter living outside the country
- Is an appointed election officer or poll watcher at a poll location outside of their poll location
- Expects to work a shift that's 10 or more hours
- Is a caregiver to a family member confined to their house (check website for specifics)
- Is currently incarcerated, but not a felon

EMERGENCY ABSENTEE VOTING applications can be made after the absentee deadline but no later than 5PM on the day before the election, if the voter: is required by an employer under unforeseen circumstances to be unavailable at the polls on the day of the election; is a caregiver of a person who requires emergency treatment by licensed physician within five days before an election; has a family member to the second degree of kinship by affinity or consanguinity die within five days before an election.

MEDICAL EMERGENCY ABSENTEE VOTING applications can be made by a voter who has a medical emergency requiring treatment from a licensed physician within 5 days of an election. The voted absentee ballot must be returned no later than noon on the day the election is held.

The medical emergency absentee ballot application requires that the attending physician describe and certify the circumstances as constituting an emergency. The voter may designate someone to turn in the medical emergency absentee ballot application, receive the absentee ballot on behalf of the voter, and return the voted absentee ballot to the Absentee Election Manager on behalf of the voter.

To obtain an absentee ballot, write or visit the local Absentee Election Manager (usually the Circuit Clerk), request an absentee ballot, and provide the following: Name and residential address (or other such information in order to verify voter registration); a copy of your valid photo identification; election for which the ballot is requested; reason for absence from polls on election day; address to which the ballot should be mailed; voter signature. (Signature must be original, electronic signatures will not be accepted. If a mark is made in place of a signature, it must be witnessed.)

The absentee ballot application must be returned to the Absentee Election Manager by the voter in person (or by the voter's designee in the case of medical emergency voting), by U.S. Mail, or by commercial carrier. No absentee ballot application may be mailed in the same envelope as another voter's absentee ballot application.

BALLOT RECEIPT

If the absentee ballot application is approved, the Absentee Election Manager forwards the absentee ballot by U.S. Mail, or personally hands the absentee ballot to the voter (or to a designee in the case of medical emergency absentee voting)

BALLOT PROCEDURE

The absentee ballot comes with 3 envelopes -- one plain (the secrecy envelope), one with an affidavit, or oath, printed on the outside, and one plain pre-addressed envelope, (the outer envelope).

Once the voter casts the ballot, the procedure is as follows:

- Seal the ballot in the plain envelope.
- Place the plain envelope inside the accompanying affidavit envelope.
- Seal the affidavit envelope and complete the affidavit that is on the outside of the envelope.
- Sign the affidavit and have the signature witnessed by either a notary public or two witnesses 18 years of age or older.

WITNESSES OR NOTARIZATION -- An absentee ballot cannot be counted unless the affidavit is notarized **or** has the signatures of two witnesses. Electronic or remote notarization is not permitted.

The voter has only the following legal ways to return the absentee ballot: Forwards the absentee ballot by U.S. Mail. Forwards the absentee ballot by commercial carrier. Personally hands their own absentee ballot to the absentee election manager (or delivers by a designee in the case of emergency absentee voting)

We know life is busy, making it hard to keep up with all the issues, so here are some key highlights.

PROJECT 2025!

WHAT REPUBLICANS WANT TO DO IF ELECTED

Project 2025 is a 922-page "governing agenda" for *Trump's or other GOP President's* next term, compiled by people from Trump's previous administration in conjunction with the ultra conservative Heritage Foundation.

It is the playbook for any conservative Republican President's actions within their first 180 days in office.

Here are just some of the planned changes dictated in Project 2025...

- 👉 *End no fault divorce*
- 👉 *Complete ban on abortions without exceptions*
- 👉 *Ban contraceptives*
- 👉 *Additional tax breaks for corporations and the 1%*
- 👉 *Higher taxes for the working class*
- 👉 *Elimination of unions and worker protections*
- 👉 *Raise the retirement age*
- 👉 *Cut Social Security*
- 👉 *Cut Medicare*
- 👉 *End the Affordable Care Act*
- 👉 *Raise prescription drug prices*
- 👉 *Eliminate the Department of Education*
- 👉 *Use public, taxpayer money for private religious schools*
- 👉 *Teach Christian religious beliefs in public schools*
- 👉 *End free and discounted school lunch programs*
- 👉 *End civil rights & DEI protections in government*
- 👉 *Ban African American and gender studies in all levels of education*
- 👉 *Ban books and curriculum about slavery*
- 👉 *End climate protections*
- 👉 *Increase Arctic drilling*
- 👉 *Deregulate big business and the oil industry*
- 👉 *Promote and expedite capital punishment*
- 👉 *End marriage equality*
- 👉 *Condemn single mothers while promoting only "traditional families"*
- 👉 *Defund the FBI and Homeland Security*
- 👉 *Use the military to break up domestic protests*
- 👉 *Mass deportation of immigrants, and incarceration "camps"*
- 👉 *End birth right citizenship*
- 👉 *Ban Muslims from entering the country*
- 👉 *Eliminate federal agencies like the FDA, EPA, NOAA and more*
- 👉 *Continue to pack the Supreme Court & lower courts with right-wing judges*

National: Issues and Concerns

Economy

Trusted sources report that our economy is strong, although inflation remains elevated. The Bureau of Labor says 15.4 million (!) jobs were added during Biden's presidency. But it doesn't feel like it for many Americans. But while Harris and Walz are working for all Americans, Trump's economic policies only care about himself and his billionaire cronies. His one major bill passed was a tax cut for the wealthy and the total national debt skyrocketed by more than \$7 trillion during Trump's tenure.

Border Security

Democrats unanimously voted for a bi-partisan bill that would have given \$25 billion for border security, while nearly every Republican voted to filibuster it, after Trump told them to vote against it so he could run and fundraise on chaos at the border.

Crime

Violent crime is at 50-year low. Tell a friend. Americans are safer from violent crime today than a year ago. An independent organization of police chiefs from the nation's largest cities released data showing that, compared to a year earlier, violent crime declined across every category in the first quarter of 2024 and murders are down 17%. *These decreases build on substantial decreases in previous years.* (Taken from Robert Hubbell's 5-4-24 newsletter)

Reproductive Freedom

The far-right Supreme Court Justices that Trump (unfairly) appointed took away the national right to abortion. If Trump wins he will make a federal law banning all abortions nationwide. We are well on our way to The Handmaids Tale.

The Supreme Court

The GOP rigged the court. President Obama had one seat stolen from him by the Republican Senate and then that same Republican Senate changed their own rules to fill in another seat at the end of Trump's presidency. In addition, there have been multiple ethics issues with conservative Justices. Thomas has for decades had financial ties to an ultra-conservative billionaire with cases before the court, and Alito openly supported the January 6th insurrectionists and refused to recuse himself from cases involving them.

Gun Safety

What kind of country are we that cares more about gun rights than we do about children being slaughtered in classrooms?! Or 7-year-olds being shot and killed while watching a 4th of July parade? Or people being gunned down while grocery shopping, praying in church and temple, while attending concerts and watching movies? ***Democrats want common sense gun safety laws; no bump-stocks, no military grade weapons unless you are in the military, and background checks for every purchase.***

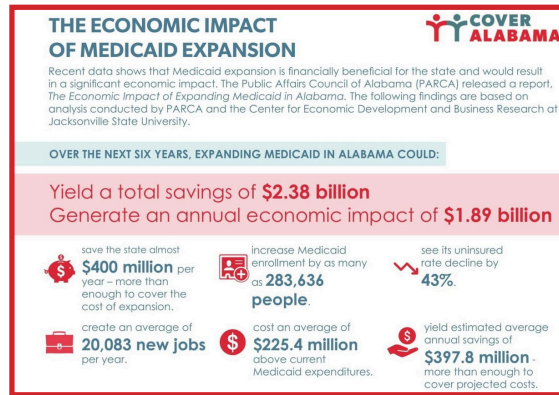
Domestic Terrorism

Remember January 6th! Remember Charlottesville! Remember the white nationalists, the militias, The Proud Boys praised by Trump! Our law enforcement officers, elected officials, and peaceful protesters shouldn't be attacked and killed by terrorists. These criminals should be convicted, imprisoned, and not later pardoned by a president.

STATEWIDE: Issues and Concerns

Expanding Medicaid

- Hundreds of thousands of Alabamians continuously struggle without health insurance
- The Republican super-majority in the legislature refuse to expand Medicaid each year, causing rural hospitals throughout the state to close
- Rural hospital closures have led to lost dollars, lost jobs and lost lives statewide



SOURCE: ALABAMA ARISE For more information about Medicaid expansion visit alarise.org

Investments in Maternal and Infant Healthcare

- Alabama ranks near the bottom (48th) in maternal and infant deaths
- 1/3 of Alabama counties are classified as maternity deserts, 25% of counties have **zero** access to prenatal and delivery care – including no labor/delivery in Shelby County
- Birth outcomes in Alabama are among the poorest in the country

Reproductive Freedoms are Shrinking

- AL has a no-exception abortion ban
- Lack of access to free or low-cost contraceptives in every single area of the state
- State officials have threatened legal penalties for helping someone travel for an abortion
- Frozen embryos for IVF have personhood status, causing turmoil for families who have unused embryos

LBGTQ+ Rights are at Risk

- Legislation denying gender-affirming medical care for transgender youth is currently on hold due to lawsuits, but Alabama's right-wing lawmakers will continue to try

The Spending of over 1 BILLION dollars on a Private Prison

- Alabama is on track to build the most expensive prison in US History
- Criminal justice and parole reform will reduce need for building expensive prisons

Common Sense Gun Laws

- State law allows anyone 18 and over to carry a handgun without a permit, background check, or safety training
- Alabama has no state law that restricts or defines "assault weapons" or large capacity magazines

Death Penalty, Prison Conditions, Criminal Justice Reform

- The death penalty should require a unanimous jury decision
- Our prisons should treat individuals with dignity and not be putting Alabamians through conditions deemed to be cruel and unusual by the Supreme Court
- Reform punitive sentencing laws

Investments in Public Transportation

- Need for transportation system that benefits all

Voting Rights and Protecting Democracy

- Institute no-excuse early voting like many of our neighboring states
- Remove barriers to voting rights restoration

Tax Reform

- Alabama needs a more just and sustainable revenue system
- Alabama needs a system that does not burden the poorest citizens but ensures all Alabamians pay their fair share

SHELBY COUNTY: Issues and Concerns

Protect Rights of North Shelby County Library Voters

- Because of HB-89, North Shelby County residents have lost the right to vote for their library board members
- State legislators from Shelby County took away those voting rights so they can choose board members in secret
- Check out ReadFreelyAlabama.org for updates on threats to our libraries

IT'S NOT ABOUT BANNING BOOKS NECESSARILY, IT'S ABOUT BANNING IDEAS. IT'S ABOUT CONTROL. IT'S ABOUT STOKING FEAR, CREATING A CRISIS ABOUT SOMETHING THAT ISN'T A PROBLEM.

No Labor and Delivery Services in Shelby County

- Shelby County, one of the state's wealthiest counties, does not have a hospital that has a labor and delivery ward
- A resident of a county with over 233,000 residents should not have to drive to Jefferson County as an only option for in-hospital births

Unfettered Growth

- Shelby County neighborhoods and businesses are expanding, but this growth is unchecked and out of control
- Our neighborhoods are losing needed noise and privacy screens because of the removal of trees and natural barriers due to this unfettered expansion

Animal Welfare

- Alabama ranks 6th in the nation in number of pets euthanized in shelters, a three year high
- More funding to humanely manage explosion of unwanted and "accidental" pets
- Encourage more community involvement and institute more spay/neuter requirements

Recycling and Keeping Our Community Clean

- Efforts in Shelby County are sporadic and inconsistent, paper recycling at Heardmont Park is inadequate
- With exploding growth, the county needs a comprehensive approach regarding recycling, composting and reuse efforts
- Work with waste disposal companies to encourage curbside recycling

We Can Do Better!

We are not afraid of things like migrants, books, children or adults who know that they aren't the sex assigned to them at birth, or men in dresses.

We are afraid of dictators in The White House, losing our voting rights, losing our right to make personal health decisions, mass shootings, extremists taking over our courts and other vital institutions, and the destruction of our planet from global warming -- you know, REAL PROBLEMS!

VOTER RESOURCES

To **REGISTER** to Vote *or* to **UPDATE** your registration information go to
www.AlabamaVotes.gov

You can register online. Or, download the State of Alabama Mail-In Voter Registration, print it, fill it out, and mail it in to your local board of registrars.

They can also mail you a voter registration form. To request an application, you can complete an online request, or call the Voter Hotline at 1-800-274-8683.

You can also register to vote at an AL DMV driver licensing office when you apply for or renew your driver's license or ID card.

Shelby County Board of Registrars (205) 669-3913

Voter registration forms may be found at the office of the Board of Registrars, 202 West College Street, Columbiana, AL 35051, or at the satellite licensing offices located in Inverness and Pelham, or any public library in the state.

Applications should be sent to:
Shelby County Board of Registrars
P.O. Box 1642
Columbiana, AL 35051-1642

***PLEASE NOTE:** Your County Board of Registrars will mail you a voter identification card upon determining that you are eligible to vote in your county. **Remember, you aren't registered until your application has been reviewed and approved.** You can check your voter registration status online.

Election deadline information for the November 5, 2024 election

What is the voter registration deadline?

IN-PERSON: Oct. 21, 2024 • **BY MAIL:** Received by Oct. 21, 2024 • **ONLINE:** Oct. 21, 2024

What is the absentee/mail-in ballot request deadline?

IN-PERSON: Oct. 31, 2024 • **BY MAIL:** Received by Oct. 29, 2024 • **ONLINE:** Oct. 31, 2024

What is the absentee/mail-in ballot return deadline?

IN-PERSON: Nov. 4, 2024 • **BY MAIL:** Received by Nov. 5, 2024

In person absentee voting begins on September 11, 2024

Go to Margaret Dawson's office at 202 West College Street, Columbiana, Alabama 35051, and vote anytime during office hours between 9/11/24 and 10/31/24.

WHERE do I Vote? Look up your polling location at
<https://myinfo.alabamavotes.gov>

*** BE AWARE! Your Polling Location May Have Changed! ***

These are the precinct changes for 2024:

- #3 **Turner-Hollis Legion *MOVED*** to Beulah Baptist Church, 49484 AL-25, Sterrett
- #24 **Restore UMC *MOVED*** to Kingswood Church, 100 Harvest Way, Alabaster
- #29 **Faith Presbyterian Church *MOVED*** to Mary Ellen Estes Senior Community Center, Heardmont Park, 5453 Cahaba Valley Rd, Bham 35242. (due to renovations at Faith Presbyterian)
- #30 **Stewart Student Center *MOVED*** to McChesney Student Activity Center, 61 College Dr, Montevallo
- #34 **Roy Downs Library *MOVED*** to Calera Baptist Church, 600 Whippoorwill Ln, Calera
- NEW PRECINCT ADDED*** #38 Double Oak Community Church, 101 Chelsea Park Dr., Chelsea, 35043

Polls are open on Election Day from 7:00 a.m. to 7:00 p.m.